

FITFLEET-EXCAVATOR-500HR-CVA

PM Checklist

● 11 ● 0 ● 91 ● 20

Inspection Number	17111264	Customer No	2969824372
Serial Number	SGJ20702	Customer Name	AUSTRALIAN HAMMER SUPPLIES HIRE PTY LTD
Make	CATERPILLAR	Customer Email	wollongongservice@wes trac.com.au
Model	335	Work Order	SD42857
Equipment Family	Medium Hydraulic Excavator	Completed On	30/04/2024 8:14:14 AM
Asset ID	AHSH69	Inspector	Yoon Venaglia
SMU	4553.13 Hours	PDF Generated On	29/04/2024
Location	Dunsters Ln, Croom, New South Wales 2527, Australia	Coordinates	0, 0, 0
Technician			

General Info & Comments

● General info/Comments ACTION

Comments: Machine operation appears normal. Some things found during service see following notes for details and pictures. Unsure if there are engine leaks or if the oil is from spillage during top up and diesel filling from previous work.

TASK SAFETY INSTRUCTIONS - Revision Number: 02 Date: 25th September 2023

- | | |
|--|------|
| ● 1.1 Wear Correct PPE at all times | PASS |
| ● 1.2 All isolation and safe work procedures must be followed | PASS |
| ● 1.3 Identify task hazards and controls utilising hierarchy or controls model | PASS |
| ● 1.4 Ensure a competent operator and spotter is utilised to move mobile equipment | PASS |
| ● 1.5 Ensure all mobile equipment is fundamentally stable | PASS |
| ● 1.6 Ensure three points of contact is maintained during access and egress | PASS |
| ● 1.7 Ensure acceptable housekeeping standards are maintained at all times | PASS |

MACHINE GENERAL RUNNING CHECKS

- 2.1 Check all work lights, beacon & reverse alarm for operation

FAIL



Image Comment(s):Front right boom globe out

- 2.2 Test all dash warning lights, gauges and audible alarms for correct operation

PASS



- 2.3 Check idle timer for correct shut down operation

N/A

- 2.4 Check operation of all three emergency stop buttons

PASS

Comments: All working

- 2.5 Check operation of horn

PASS

- 2.6 Check operation of reverse camera

PASS



- 2.7 Check alternator charge voltage - ACTUAL_____V PASS



- 2.8 Check operation of auto grease system by manually activating timer N/A

- 2.9 Check fire system control panel for 'Normal' N/A

- 2.10 Test hydraulic lock out function operation PASS

- 2.11 Check window wiper and washer operation PASS

Comments: Working but needs new blade. Windscreen also cracked

PM SAFETY GENERAL INSPECTION

- 3.1 Visually ensure all guards, shields and covers are in place and in good condition to ensure personal are protected from rotating parts PASS



● 3.2 Check condition of machine identification signage PASS

● 3.3 Inspect ROPS/FOPS condition PASS



PM BRAKING SYSTEM

● 4.1 Test travel brakes – Ensure the machine comes to a stop when travel controls are released PASS

● 4.2 Test travel brakes – Ensure the brakes hold on a suitable slope PASS

PM FIRE SUPPRESSION SYSTEM

● 5.1 Ensure fire suppression bottle and components are securely mounted and in good condition N/A

● 5.2 Ensure fire suppression is correctly charged N/A

5.3 Inspect last charge date - ACTUAL _____

N/A

5.4 Check all fire extinguishers are securely mounted and in good condition

PASS



5.5 Check all fire extinguishers are correctly charged

PASS



5.6 Inspect last charge date - ACTUAL _____

PASS



PM ENGINE

6.1 Perform engine valve set

N/A

● 6.2 Inspect air intake system hoses, pipes, clamps for signs of dirt ingress

PASS



● 6.3 Inspect engine for oil or fuel leaks

FAIL

Comments: Appears to have had oil spilled over it when filling previously. Cleaned down top and monitor. Hard to tell if there are any other leaks due to oil spill.



● 6.4 Inspect engine components for missing clamps

PASS



● 6.5 Inspect exhaust system for signs of leaks, loose bolts or missing clamps

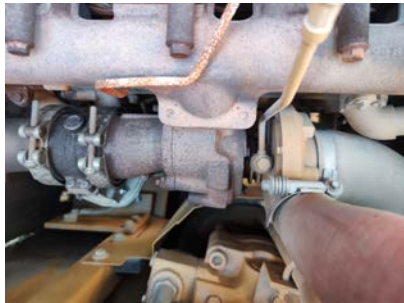
PASS

Comments: Tailpipe clamp may need replacing due to rust. Everything else ok.





-
- 6.6 Inspect turbo for security and signs of leaks PASS



-
- 6.7 Inspect condition of exhaust lagging N/A

-
- 6.8 Inspect engine mounts for condition and loose hardware PASS



-
- 6.9 Inspect alternator mount condition and adjustment PASS



● 6.10 Inspect wiring condition and security PASS

● 6.11 Clean engine breather PASS



● 6.12 Replace outer air filter PASS



● 6.13 Inspect & adjust engine belts PASS

Comments: Belt is not cracking or edges wearing



PM ENGINE COOLING SYSTEM

- 7.1 Check coolant level PASS



- 7.2 Check condition of radiator cap PASS

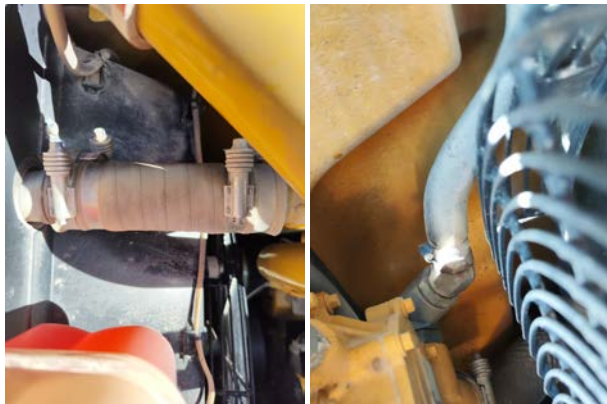


- 7.3 Check condition of radiator core and blow out PASS



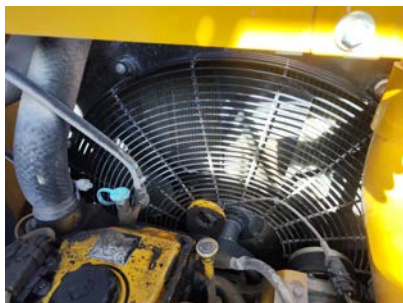
● 7.4 Check cooling system for signs of leaks PASS

● 7.5 Check hose and clamp condition PASS



● 7.6 Inspect fan condition and operation PASS

● 7.7 Inspect radiator and fan guard condition PASS



PM SWING TRANSMISSION

● 8.1 Inspect swing transmission for signs of leaks PASS



- 8.2 Inspect swing transmission oil level

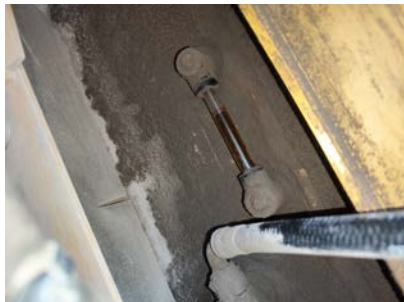
PASS



PM HYDRAULIC SYSTEM

- 9.1 Check hydraulic oil level

PASS



- 9.2 Inspect hydraulic cylinders for leaks and security

PASS

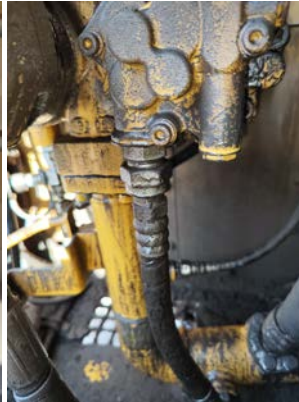




● **9.3 Inspect hydraulic hoses for leaks, damage, security**

FAIL

Comments: Hose swining from boom



● **9.4 Inspect hydraulic pump condition, leaks, security**

FAIL

Comments: Looks like there is a massive leak somewhere, however may just be diesel spillage from above.



● **9.5 Check Pilot Accumulator operation as per OEM Maintenance Procedure -
Test Boom Down Functionality with engine off**

PASS

PM FINAL DRIVES

- 10.1 Inspect LHS final drive mount condition for leaks and security

PASS



- 10.2 Inspect LHS oil level and mag plug condition

PASS

Comments: Level ok

- 10.3 Inspect RHS final drive mount condition for leaks and security

PASS



- 10.4 Inspect RHS oil level and mag plug condition

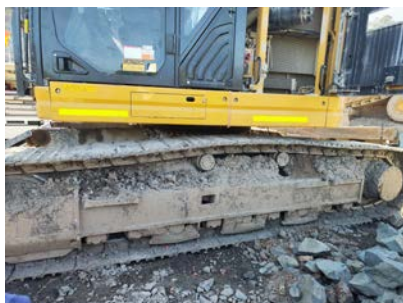
PASS

Comments: Level ok

PM UNDERCARRIAGE

- 11.1 Inspect LHS track tension

PASS



- 11.2 Inspect RHS track tension

PASS



● **11.3 Inspect tracks for loose/missing bolts** PASS

Comments: Hard to inspect due to dirt and mud

● **11.4 Inspect load and carrier rollers for signs of leaks** PASS

Comments: Hard to inspect due to mud and dirt



● **11.5 Inspect idlers for signs of leaks** PASS

Comments: Hard to inspect due to mud and dirt





● **11.6 Inspect sprocket segments condition**

PASS

Comments: Hard to inspect due to dirt and mud



● **11.7 Inspect track frame for cracks, lose or missing hardware**

PASS

Comments: Hard to inspect due to dirt and mud



PM FRAME AND BODY

● **12.1 Check panels for damage and security**

PASS





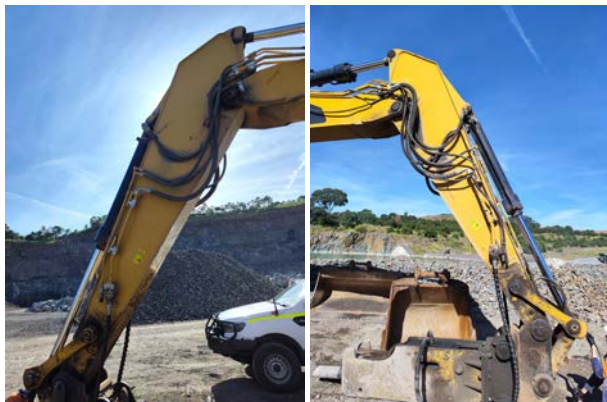
-
- 12.2 Check access steps and walkway condition PASS



-
- 12.3 Inspect boom condition – cracks, missing clamps, damaged pipes, excessive movement, lubrication PASS



-
- 12.4 Inspect stick condition – cracks, missing clamps, damaged pipes, excessive movement, lubrication PASS



● 12.5 Inspect quick hitch condition and operation PASS



● 12.6 Inspect bucket condition – cracks, wear, damage, mounts N/A

● 12.7 Inspect GET condition and hardware N/A

PM ELECTRICAL SYSTEM

● 13.1 Check battery condition PASS

● 13.2 Check battery terminal condition PASS

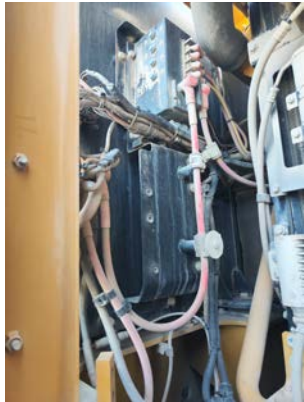


● 13.3 Check battery security FAIL



● 13.4 Check battery box drain is clear PASS

● 13.5 Check wiring condition and security PASS



PM GREASE SYSTEM

● 14.1 Check all points for acceptable lubrication FAIL

Comments: Blade pins will not take grease, rocks jammed in between cylinder and blade cannot remove with hammer and chisel. Excessive play in front blade pins due to lack of grease



● 14.2 Inspect grease system operation N/A

● 14.3 Check grease line condition PASS

●	14.4 Refill grease tank	N/A
●	14.5 Lubricate bucket linkage	PASS
●	14.6 Lubricate blade linkage	FAIL
Comments: Excessive play, buried in rock and dirt. Will not take grease		
●	14.7 Lubricate boom & stick linkage	PASS
●	14.8 Lubricate swing bearing	PASS

PM OPERATOR STATION

●	15.1 Check all doors for correct opening and closing adjustments and operation	PASS
●	15.2 Inspect condition of door seals	PASS



●	15.3 Check window glass and seal condition	FAIL
Comments: Windscreen cracked		



● 15.4 Check mirror condition and adjustments

FAIL

Comments: RHD side mirrors broken



● 15.5 Fill window washer reservoir

N/A

● 15.6 Inspect air con vents condition

PASS



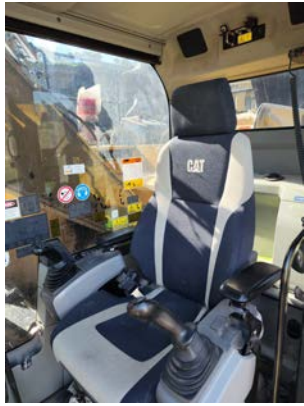
● 15.7 Inspect seat belt and mounting hardware

PASS



● 15.8 Inspect seat condition, operation and mounting

PASS



●	15.9 Replace cabin A/C filter	N/A
Comments: Not supplied		

OIL SAMPLING

●	16.1 Engine	PASS
●	16.2 Hydraulic System	PASS
●	16.3 LHS Final Drive	PASS
●	16.4 RHS Final Drive	PASS
●	16.5 Swing Transmission	PASS
●	16.6 Coolant	PASS

OIL AND FILTERS

●	17.1 Replace engine oil	PASS
---	-------------------------	------



●	17.2 Replace engine oil filter	PASS
---	--------------------------------	------



●	17.3 Replace primary fuel filter (water separator) element	PASS
---	--	------



●	17.4 Replace secondary fuel filter	PASS
---	------------------------------------	------



●	17.5 Replace fuel system third filter	N/A
---	---------------------------------------	-----

●	17.6 Replace outer air filter	PASS
---	-------------------------------	------

●	17.7 Replace cab filter	N/A
---	-------------------------	-----

●	17.8 Replace A/C filter	N/A
---	-------------------------	-----

●	17.9 Replace hydraulic case drain filter	N/A
---	--	-----

●	17.10 Replace hydraulic pilot filter	N/A
---	--------------------------------------	-----

PM POST SERVICE INSPECTION CHECKS		
-----------------------------------	--	--

●	18.1 All inspections have been completed and rectified as required	PASS
---	--	------

●	18.2 All safety related defects have been repaired or reported	PASS
---	--	------

●	18.3 All defects have been noted and reported	PASS
---	---	------

●	18.4 All fluids are at correct level and drain plugs tight	PASS
---	--	------

●	18.5 All oil samples have visually been inspected and any notable signs of contamination have been reported	PASS
---	---	------

●	18.6 All replaced filters have been cut and inspected and photos added to CAT Inspect and reported to supervisor	N/A
---	---	-----

●	18.7 Machine has been recommissioned and ready for operation	PASS
---	--	------

●	18.8 PM service notification marked off in Vision Link	COMPLETED
---	--	-----------

DEFECTS IDENTIFIED		
--------------------	--	--

●	19.1 DEFECTS IDENTIFIED	FAIL
---	-------------------------	------

<div>Comments: Windscreen broken, missing mirrors, potential oil leaks/diesel spillage, blade pins not taking grease and showing signs of wear in bores,</div>		
--	--	--